

EAT • DRINK • CELEBRATE • STAY • PLAY • LINGER • WORK

# THE ALBION SUMMIT



WELCOME TO SUMMIT

---

# THE COLORFUL SIDE OF LUXURY

DISCOVER THE ALBION SUMMIT HOTEL,  
WHERE CLASSIC BRITISH CHARM MEETS  
MODERN LUXURY IN THE HEART OF  
SUMMIT, NEW JERSEY.

This exquisite retreat is more than just a place to stay—it's a vibrant hub of art, culture, and innovation. Immerse yourself in our curated art collections, relax in the intimate listening studio, or unleash your creativity in our state-of-the-art recording studio. For those blending work and leisure, our sophisticated Living Room offers the perfect environment for productivity. Indulge in culinary delights at Felina, our renowned on-site restaurant, or catch a captivating performance in our elegant theater. As the day winds down, unwind in our exclusive whiskey lounge, savoring fine spirits in an atmosphere of refined elegance.

Whether you're here to eat, work, play, or stay, The Albion Summit Hotel promises an unforgettable experience that caters to every passion and pursuit.

908.273.3000

[www.thealbionhotels.com](http://www.thealbionhotels.com)

@thealbionhotels

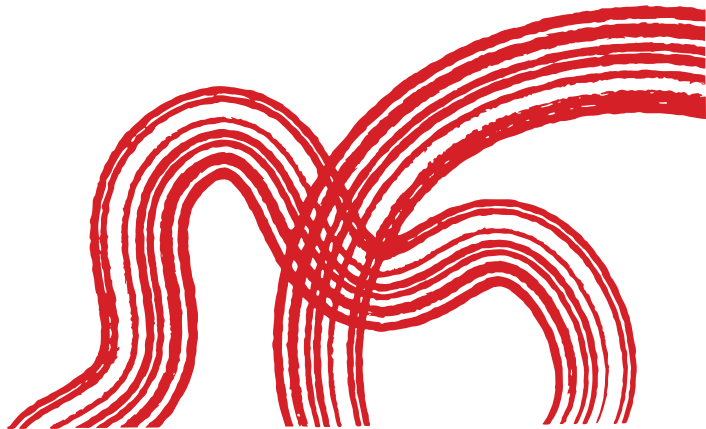
570 springfield ave, summit, nj 07901



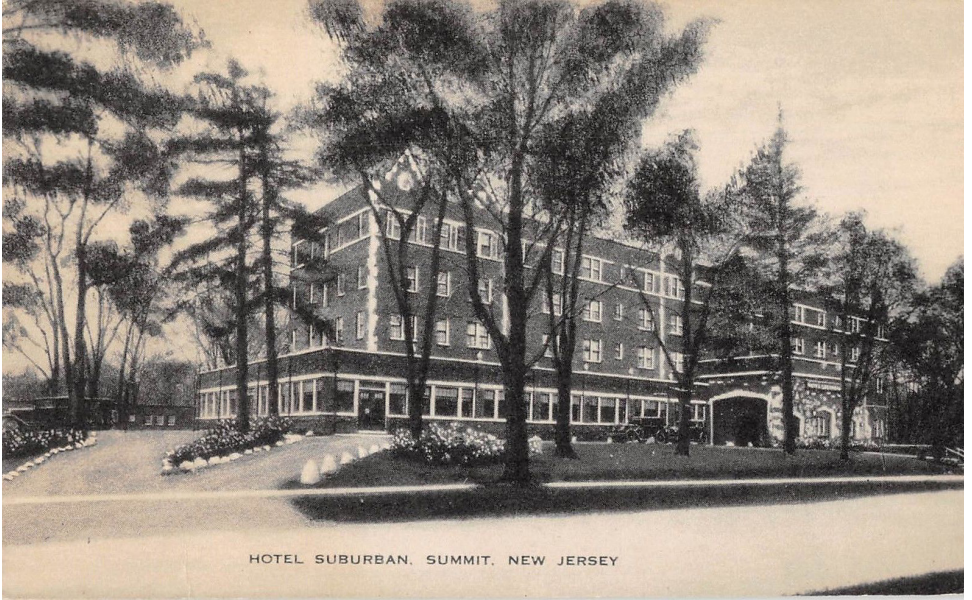
# TABLE OF CONTENTS

---

<b>THE COLORFUL SIDE OF LUXURY</b> .....	2
<b>HISTORY</b> .....	4
<b>RISE &amp; DINE</b> .....	6
<b>DINNER &amp; DRINKS</b> .....	7
<b>PAMPER YOURSELF</b> .....	8
<b>BOUTIQUE &amp; BEYOND</b> .....	9
<b>LANDMARK CLUB</b> .....	11
<b>FELINA</b> .....	13
<b>THE LIVING ROOM</b> .....	14
<b>WHISKEY &amp; CIGARS</b> .....	15
<b>EVENT SPACE</b> .....	16
<b>MAKING OUR MARK</b> .....	17



# HISTORY



## DID YOU KNOW?

The Albion Summit's history dates back to 1868 as the Blackburn House, a refuge for wealthy New Yorkers seeking a respite from city life. As the area's popularity grew, the Blackburn House was replaced by the Summit Suburban Hotel, built by European craftsmen. During the Great Depression, the hotel's fortunes declined. By 1929, the Blackburn House was demolished and replaced with a classic Tudor-style mansion, featuring a vaulted ceiling, gold leaf detailing, and stone fireplace. The hotel still bears the initials of its original owner, Harry A Taylor, hidden in the brickwork at the entrance, and its popular HAT Tavern is a nod to both Taylor and the hotel's subsequent owner.





**“TALK  
ABOUT A  
DREAM,  
TRY TO  
MAKE IT  
REAL”**

— BRUCE SPRINGSTEEN

# RISE & DINE

## SUMMIT DINER

1 UNION PLACE • 908-277-3256

## THE COMMITTED PIG

339 SPRINGFIELD AVENUE • 908-219-4543

# CAFFEINE FIX

## BOXWOOD COFFEE

17 BEECHWOOD ROAD • 908-219-4076

## GREGORY'S COFFEE

342 SPRINGFIELD AVENUE • 1-877-220-3043

# AFTERNOON EATS

## SUMMIT GREEK GRILL

GREEK • 90 SUMMIT AVENUE • 908-277-6418

## TITO'S BURRITOS & WINGS

WINGS • 356 SPRINGFIELD AVENUE • 908-277-3710

## MARIGOLD'S

RUSTIC AMERICAN • 426 SPRINGFIELD AVENUE • 908-500-2035

## HILL CITY DELI

DELI • 387 SPRINGFIELD AVENUE • 908-273-3034

# SWEET TREATS

## MAGIC FOUNTAIN

ICE CREAM • 498 MORRIS AVENUE • 908-273-2565

## MCCOOL'S

ICE CREAM & FROZEN YOGURT • 14 BEECHWOOD ROAD • 908-522-9731

## SWEET NOTHINGS

CHOCOLATE & CANDIES • 26 BEECHWOOD ROAD • 908-522-0888



# DINNER & DRINKS

*mangia!*

## FELINA

ITALIAN • JOIN US DOWNSTAIRS • 908-273-3000

## ANI RAMEN

JAPANESE • 427 SPRINGFIELD AVENUE • 908-224-2085

## BLOSSOM ASIAN BISTRO

CHINESE • 379 SPRINGFIELD AVENUE • 908-288-6800

## ROOTS STEAKHOUSE

STEAKHOUSE • 401 SPRINGFIELD AVENUE • 908-273-0027

## WINBERIE'S

AMERICAN • 2 KENT PLACE BOULEVARD • 908-277-4224

## FIN RAW BAR & KITCHEN

SEAFOOD • 37 MAPLE STREET • 908-277-1414

## FIORINO RISTORANTE & BAR

NORTHERN ITALIAN • 38 MAPLE STREET • 908-277-1900

## THE OFFICE

AMERICAN PUB • 61 UNION PLACE • 908-522-0550

## SUMMIT HOUSE

NEW AMERICAN • 395 SPRINGFIELD AVENUE • 908-273-6000

## FOUR MONKEYS

INDIAN • 83 SUMMIT AVENUE • 908-483-2288

## VILLAGE TRATTORIA

PIZZA • 103 SUMMIT AVENUE • 908-608-1441

## PIZZA VITA

PIZZA • 7 UNION PLACE • 908-277-1400

## LA PASTARIA

CASUAL ITALIAN • 327 SPRINGFIELD AVENUE • 908-522-9088

## BARBACOA

TACOS • 10 MAPLE STREET • 908-273-6006

## DUE 360

TAPAS • 50 MAPLE STREET • 908-608-0222





## **PAMPER YOURSELF**

### **BLOW IN BLOW OUT**

330 SPRINGFIELD AVENUE • 908-273-4947

### **ZOKU SALON**

17 UNION PLACE • 908-273-9658

### **LUSSO NAILS**

545 MORRIS AVENUE • 908-522-8787

### **NICKY'S BARBERSHOP**

76 SUMMIT AVENUE • 908-574-3400

## **GET UP & GO**

### **HOME POWER YOGA**

YOGA STUDIO • 463 SPRINGFIELD AVENUE • 908-263-7066

### **THE SUMMIT PLAYHOUSE**

THEATER • 10 NEW ENGLAND AVENUE • 908-273-2192

### **REEVES-REED ARBORETUM**

ARBORETUM & GARDEN • 165 HOBART AVENUE • 908-273-8787

### **THE DAILY PILATES**

PILATES STUDIO • 428 SPRINGFIELD AVENUE, 2ND FLOOR • 908-608-4203

### **SHORT HILLS MALL**

SHOPPING • 3 MILES FROM THE ALBION SUMMIT • 908-376-7350

## **TRAVEL TO THE CONCRETE JUNGLE**

### **BY TRAIN OR BY BUS**

Summit has a train station that provides direct service to New York City's Penn Station via the NJ Transit Midtown Direct line. NJ Transit also operates several bus routes from Summit to Manhattan, including the 107 and 908 lines.

### **BY CAR**

Summit is located approximately 20 miles west of Manhattan, and driving is an option. However, traffic can be heavy during peak times.



# BOUTIQUES & BEYOND

## THE SUMMIT ANTIQUES CENTER

ANTIQUÉ SHOP • 511 MORRIS AVENUE • 908-273-9373

@thesummitantiquescenter

## KANIBAL + CO.

GIFT SHOP • 27 MAPLE STREET • 908-723-4744

@shopkanibal

## LOBLOLLY CURATED HOME & GIFT

GIFT SHOP • 42 MAPLE STREET • 973-679-0110

@loblolly\_homeandgift

## SCHROTH & LORENSON JEWELERS

JEWELER • 446 SPRINGFIELD AVENUE • 908-273-1676

@schroth\_and\_lorenson

## J. MCLAUGHLIN

CLOTHING STORE • 10 BEECHWOOD ROAD • 908-918-1801

@jmclaughlin

## LULULEMON

SPORTSWEAR STORE • 402 SPRINGFIELD AVENUE • 908-224-6759

@lululemon

## VIBURNUM DESIGNS FLORIST

FLORIST • 434 SPRINGFIELD AVENUE • 908-679-8855

@viburnumdesigns

## CAMBRIDGE WINES

LIQUOR STORE • 320 SPRINGFIELD AVENUE • 973-984-9463

@cambridgewines

## FLOREZ TOBACCONIST

TOBACCO SHOP • 37 BEECHWOOD ROAD • 908-598-1600

@floreztobacconist

## HILLTOP BICYCLES

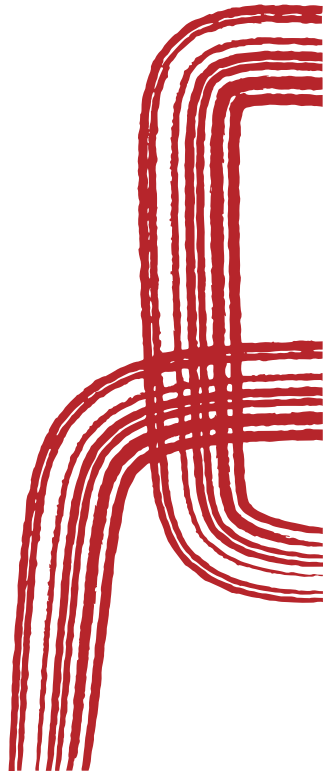
BICYCLE SHOP • 314 SPRINGFIELD AVENUE • 908-219-4622

@hilltop.bicycles

## THE SUMMIT PLAYHOUSE

THEATER • 10 NEW ENGLAND AVENUE • 908-273-2192

@summitplayhouse





**"I FACED IT  
ALL AND I  
STOOD TALL  
AND DID IT  
MY WAY"**

**— FRANK SINATRA**

# THE LANDMARK CLUB



## EXPERIENCE ALL ACCESS...

Landmark Club is an exclusive private members club, designed for entertaining and taking part in exceptional programming. We create a dynamic environment where deals are made, and business, pleasure, and networking seamlessly intertwine. Bring your friends, family, and colleagues to spaces designed with the member in mind.

Receive elevated access to all Landmark properties and exclusive access to all Club spaces. The Club focuses on creating unique experiences with tailored concierge services, co-working facilities, and exclusive events to enhance lifestyle and opportunities, combining the best of the Landmark portfolio with unmatched hospitality.

## LANDMARK CLUB OFFERS TWO UNIQUE MEMBERSHIPS BASED ON YOUR LIFESTYLE:

### THE MEMORYMAKER MEMBERSHIP

A FULL ACCESS MEMBERSHIP THAT CAPTURES ALL THE PERKS AND BENEFITS THAT THE CLUB OFFERS, INCLUDING THE CIGAR LOUNGE MEMBERSHIP

### THE CIGAR LOUNGE MEMBERSHIP

CHOOSE YOUR VENUE - LOGAN INN IN NEW HOPE, THE ALBION SUMMIT OR THE RYLAND INN IN WHITEHOUSE STATION. GAIN ACCESS TO THE CIGAR LOUNGE, PERSONAL CIGAR AND WHISKEY LOCKERS, AND MORE.




« APPLY NOW

@thelandmarkclub  
www.landmarkmembers.com



LANDMARK  
CLUB



**“I DECIDED  
LONG AGO  
NEVER TO  
WALK IN  
ANYONE'S  
SHADOWS”**

**— WHITNEY HOUSTON**

# EAT & DRINK @

*felina*

Felina Summit extends the legacy of Felina Ridgewood and Felina Steak JC. Felina offers an extraordinary culinary journey with elevated comfort food prepared using modern techniques. Felina Summit enriches the Felina tradition with its unique blend of sophistication and innovation, setting a new standard for dining in Summit and enhancing the vibrant culinary scene of The Albion Summit. Now open from 5-10pm, 7 days a week. Brunch & lunch coming soon!



LET'S BE FRIENDS! @FELINARESTAURANTS



FELINA, RIDGEWOOD

FELINA, SUMMIT

FELINA STEAK, JERSEY CITY



JOE TARTAMELLA, EXECUTIVE CHEF | ANTHONY BUCCO, SVP CULINARY OPERATIONS





# LIVING ROOM

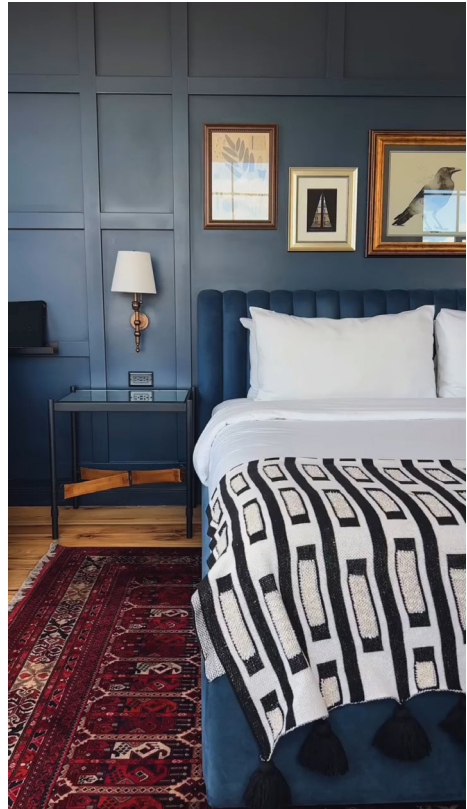
Transitioning from the lobby, guests discover the **Living Room**, a light-filled co-working space ideal for productivity and socializing. Featuring a welcoming self-serve coffee bar by **The Muddy Cup**, this space transforms into a lively cocktail lounge in the evening, with two private conference rooms available for bookings.

# STAY AWHILE

## HOTEL ROOMS

Our current hotel rooms were renovated prior to Landmark acquiring the property in 2023. We are currently open. Landmark room renovations and enhancements will happen in stages.

After our enhancements, we will offer 100 hotel rooms, each with a unique size and shape, providing a captivating experience for every guest. With no room style repeated more than three times, each stay promises a fresh and distinctive ambiance. From intimate rooms to spacious suites, the accommodations cater to discerning travelers' individual preferences, offering upscale amenities, luxurious furnishings, and modern technology for a comfortable and enjoyable stay.



# WHISKEY & CIGARS

*A sanctuary of sophistication, where every glass tells a story.*

Here we curate world-class whiskeys from around the globe, offering a journey through rich flavors and craftsmanship. Whether you're a seasoned connoisseur or just starting out, our lounge is the perfect place to savor the finest spirits. At The Albion Summit, connect with fellow Landmark Club Members and enjoy cigars in style with your own whiskey and cigar locker.

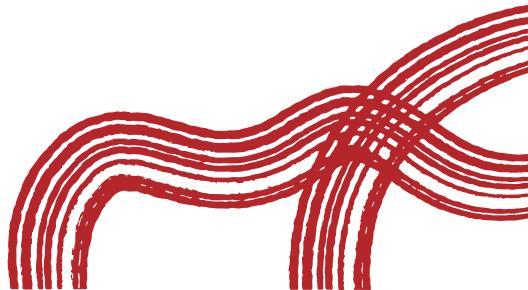
*Ask about our exclusive Stork Club Cigars!*

# MOVIE THEATER

An amphitheater-style movie theater with a concession stand offers entertainment options perfect for your next corporate event, after party, or movie premiere. Our theater holds up to 50 guests.

# PRIVATE DINING

Our private dining room at Felina Summit is located in our wine cellar and offers an intimate setting for special occasions, surrounded by captivating artwork and historic charm.



# ELEVATE YOUR FOREVER



Our first event space is where old-world charm meets a distinctive modern edge, a combination of elegance and non-traditional luxury. This unique untraditional hotel wedding venue boasts a two-story double-sided fireplace, 8 antique brass geometric custom chandeliers, and an open-kitchen space for cocktail hour.

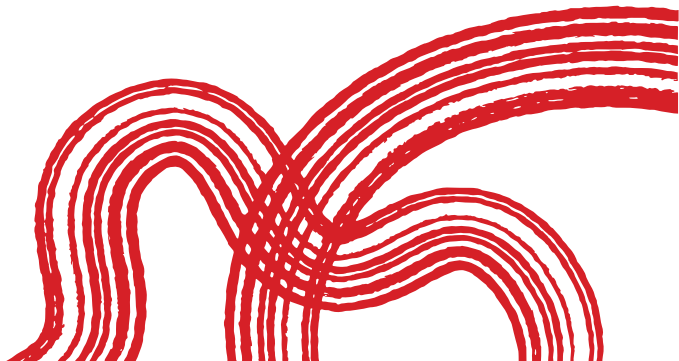
**LET'S BE FRIENDS!**  
@thealbionhotels  
@landmark.weddings  
LANDMARKVENUES.COM

# UNDER CONSTRUCTION

## RECORDING STUDIO, LISTENING ROOM, & POP-UP SUSHI RESTAURANT

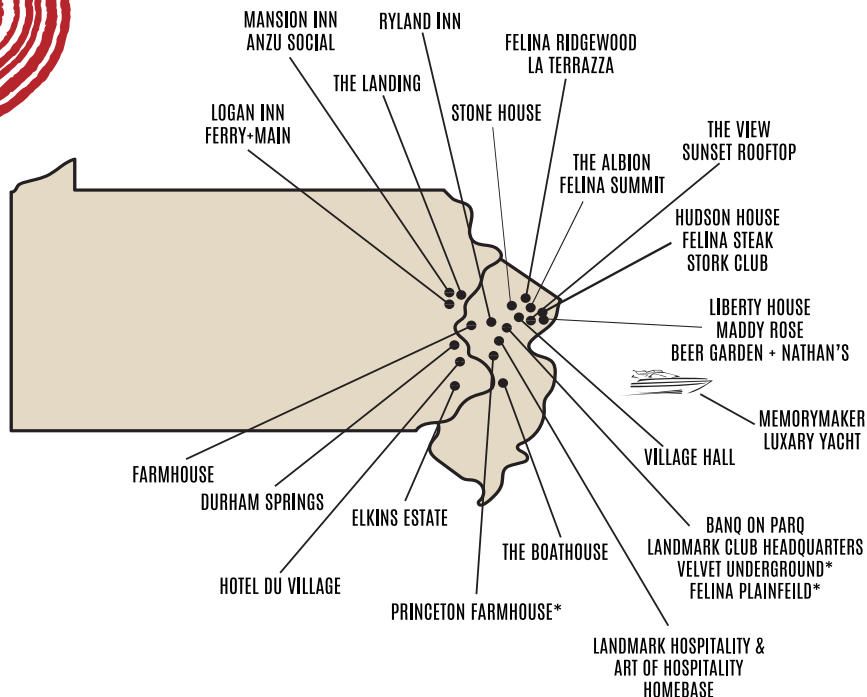
Brass Pin Productions proudly announces the launch of Slow Burn Studios, a haven for artists seeking the perfect blend of recording excellence, auditory bliss, and serene relaxation.

Located on the upper level of The Albion Summit, Slow Burn Studios offers state-of-the-art recording facilities, podcast studios, and plush listening room suite. Indulge in a culinary delight at our exclusive pop-up sushi concept. At Slow Burn Studios, we're not just making music - we're creating an experience.





# MAKING OUR MARK



**BANQ ON PARQ** PLAINFIELD, NJ • **DURHAM SPRINGS** KINTNERSVILLE, PA • **ELKINS ESTATE** ELKINS PARK, PA  
**FARMHOUSE** HAMPTON, NJ • **FELINA RIDGEWOOD**, NJ • **HOTEL DU VILLAGE** NEW HOPE, PA  
**HUDSON HOUSE** JERSEY CITY, NJ • **LANDMARK HOSPITALITY** PLAINFIELD, NJ • **LIBERTY HOUSE** JERSEY CITY, NJ  
**LOGAN INN** NEW HOPE, PA • **MANSION INN** NEW HOPE, PA • **PRINCETON FARMHOUSE** PRINCETON, NJ  
**RYLAND INN** WHITEHOUSE STATION, NJ • **STONE HOUSE** WARREN, NJ • **THE ALBION** SUMMIT, NJ  
**THE BOATHOUSE** WEST WINDSOR, NJ • **THE LANDING** NEW HOPE, PA • **THE VIEW** JERSEY CITY, NJ  
**VILLAGE HALL** SOUTH ORANGE, NJ

**@LANDMARKHOSPITALITY • @LANDMARK.WEDDINGS**  
**@THELANDMARKCLUB**

LANDMARKHOSPITALITY.COM • LANDMARKVENUES.COM • LANDMARKMEMBERS.COM